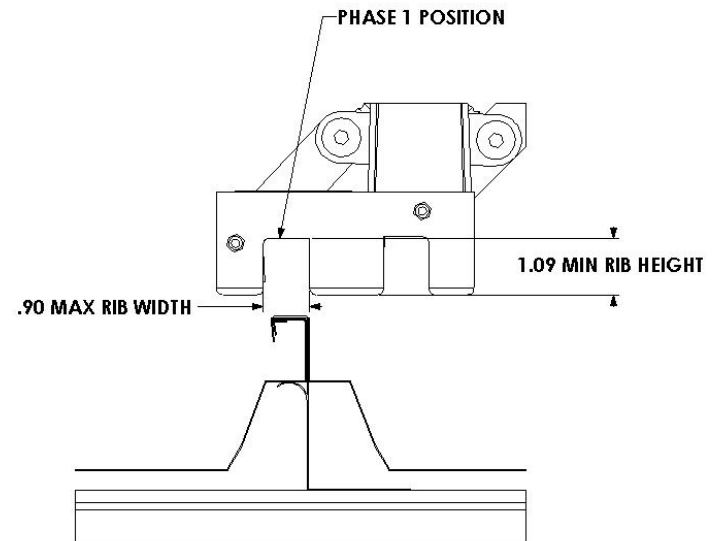
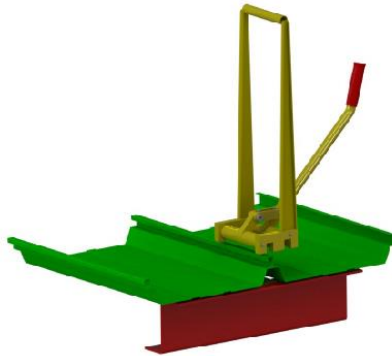


DOUBLELOK DOUBLE PHASE CRIMPER READY TO PLACE ON THE PANEL RIBS

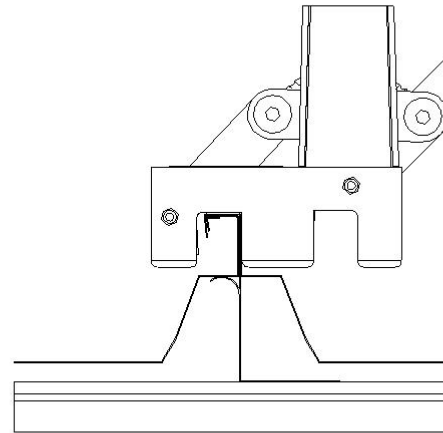
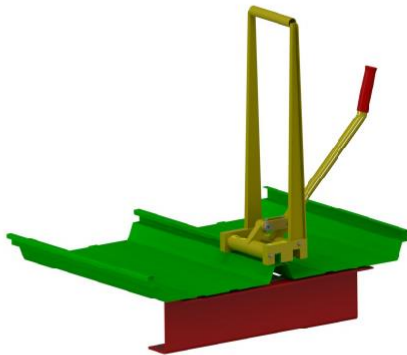
DOUBLELOK DOUBLE PHASE CRIMPER READY TO BE PLACED ON PANEL RIBS



DOUBLELOK DOUBLE PHASE CRIMPER READY TO BE PLACED ON THE DOUBLELOK PANEL RIB.

DOUBLELOK DOUBLE PHASE CRIMPER PLACED ON THE PANEL RIB

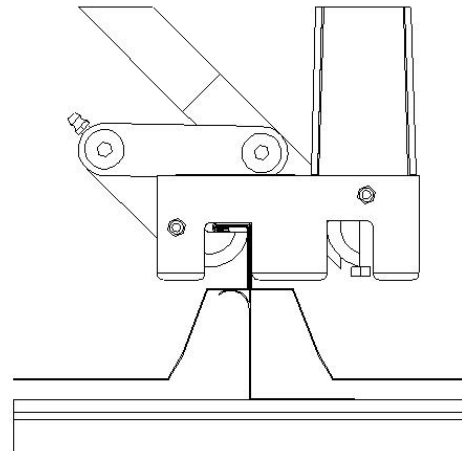
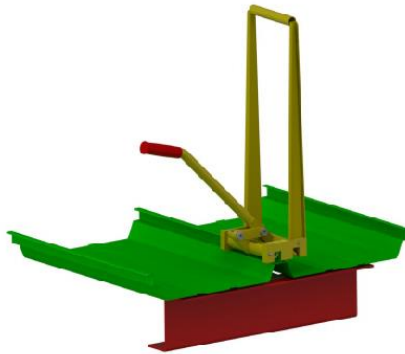
DOUBLELOK DOUBLE PHASE CRIMPER PLACE ON PANEL RIBS



DOUBLELOK DOUBLE PHASE CRIMPER PLACED
ON RIBS TO BEGIN PHASE 1 CRIMP.

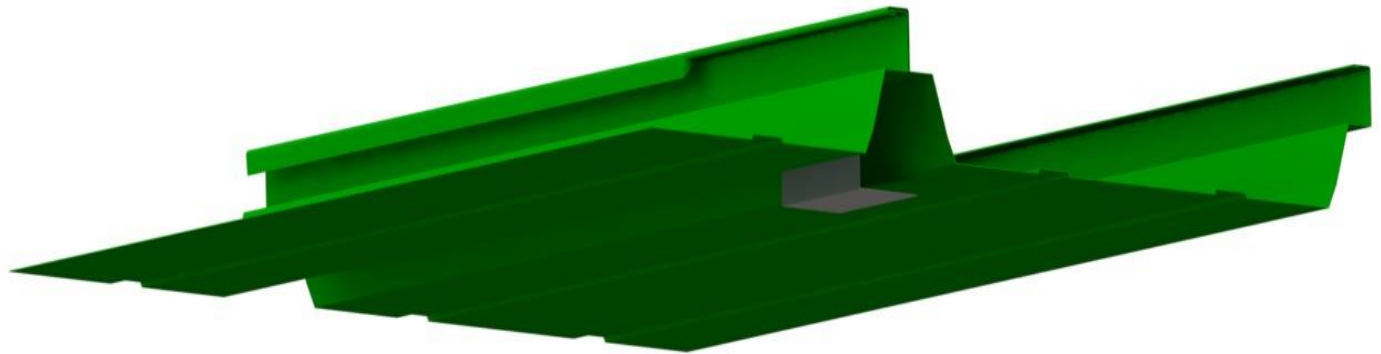
DOUBLELOK DOUBLE PHASE CRIMPER CRIMPS THE RIBS

DOUBLELOK DOUBLE PHASE CRIMPS THE PANEL RIBS



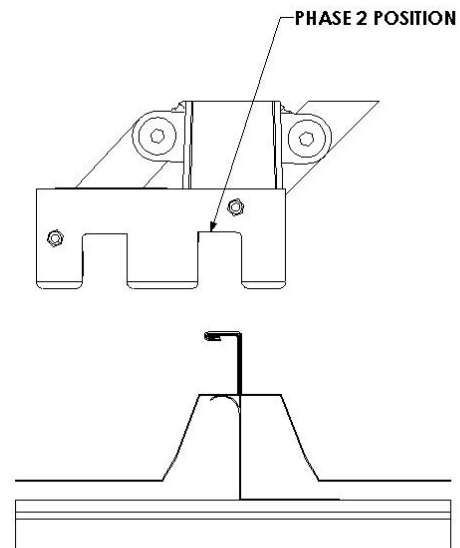
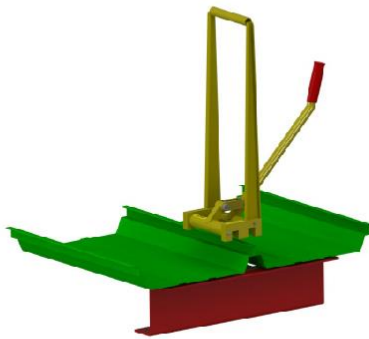
DOUBLELOK DOUBLE PHASE CRIMP HANDLE
ACTION CRIMPS PANEL RIBS 90 °.

DOUBLELOK DOUBLE PHASE CRIMP PROFILE FOR FIRST PHASE



DOUBLELOK DOUBLE PHASE CRIMPER READY TO PLACE ON THE PANEL RIBS AFTER BEING MOVED TO THE PHASE 2 POSITION

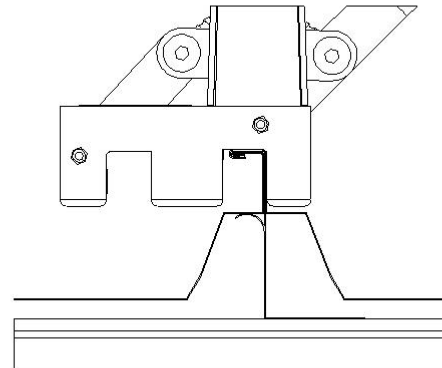
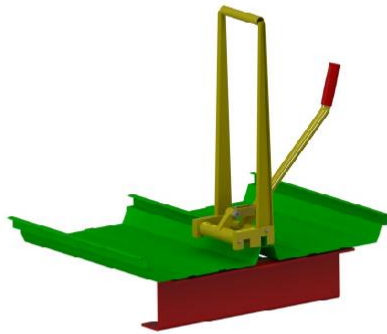
DOUBLELOK DOUBLE PHASE CRIMPER READY TO BE PLACED ON PHASE 1 CRIMPED PANEL RIBS



DOUBLELOK DOUBLE PHASE CRIMPER READY TO BE PLACED ON THE DOUBLELOK PHASE 1 CRIMPED PANEL RIB.

DOUBLELOK DOUBLE PHASE CRIMPER PLACED ON THE PANEL RIB

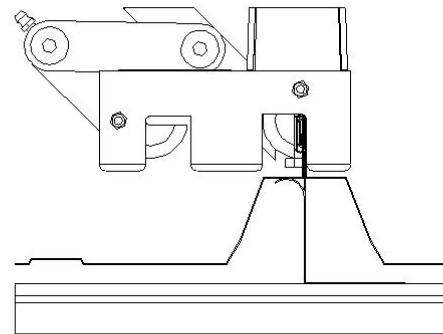
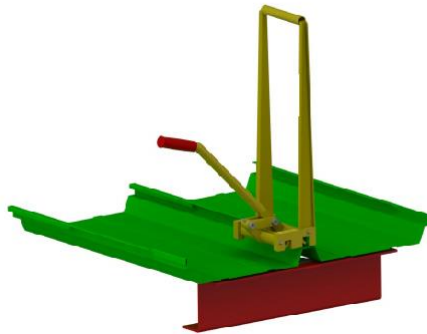
DOUBLELOK DOUBLE PHASE CRIMPER PLACE ON PHASE 1 CRIMPED PANEL RIBS



DOUBLELOK DOUBLE PHASE CRIMPER PLACED
ON PHASE 1 CRIMPED RIBS TO BEGIN PHASE 2 CRIMP.

DOUBLELOK DOUBLE PHASE CRIMPER CRIMPS THE RIBS TO 180° POSITION

DOUBLELOK DOUBLE PHASE CRIMPS PANEL RIBS TO 180 °



DOUBLELOK DOUBLE PHASE CRIMP HANDLE
ACTION COMPLETES PANEL RIB CRIMP TO 180 °.

DOUBLELOK DOUBLE PHASE CRIMP PROFILE.

